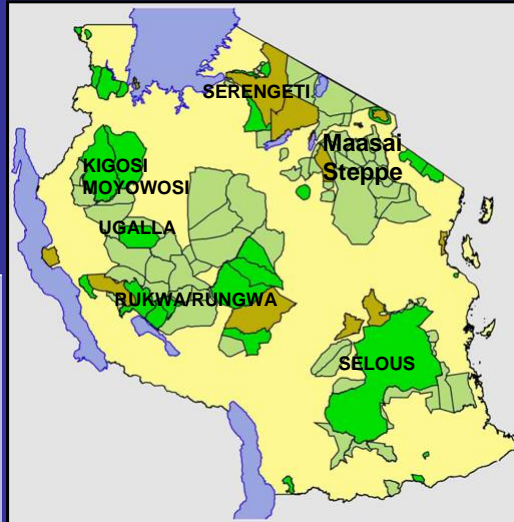


# Tanzania

Pop: 38 million (~California)  
Area: 945,087 km<sup>2</sup>  
(CA+NV+OR)  
Pvd rds: 6,808 km (Phoenix)

<b>GDP</b>	\$29.64 billion (1.85% of Calif)
<b>Growth</b>	6.9%
<b>GDP by sector</b>	Agricult. (43%), Industry (18%), Tourism (17%)
<b>Labor force</b>	Agricult. (80%), Industry (10%)



36-90% Poverty rate  
71.69 deaths/1,000 live births  
1.6 m people infected with HIV

Aid/GDP ratio >25% in 1996  
Donors funded 42% of Gov't operating budget in 2007

## The Whole Village Project Savannas Forever Tanzania



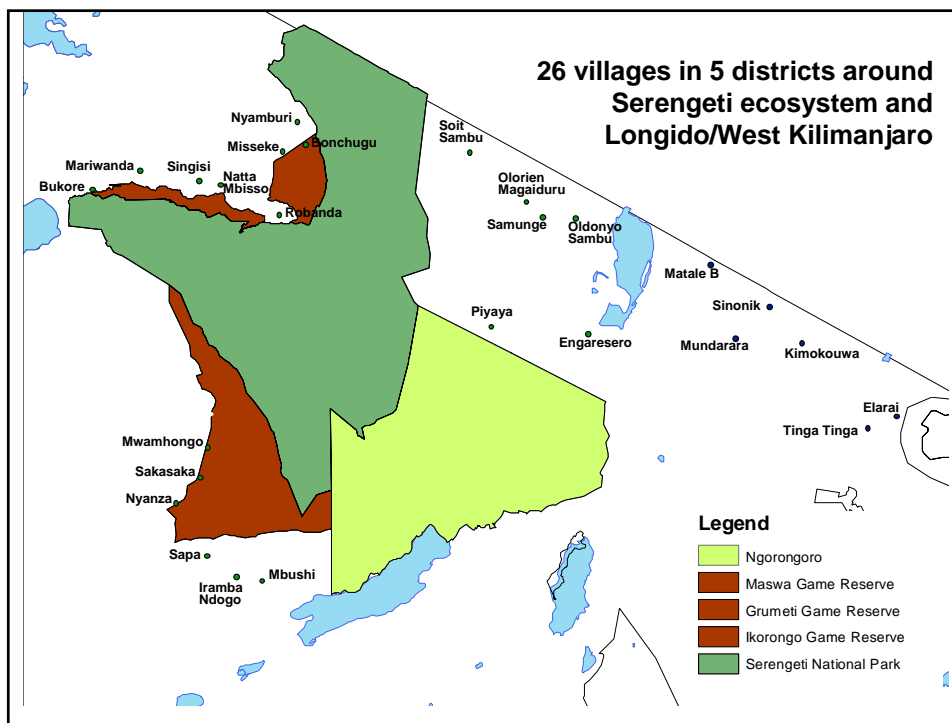
TZ Registered Aug 2006

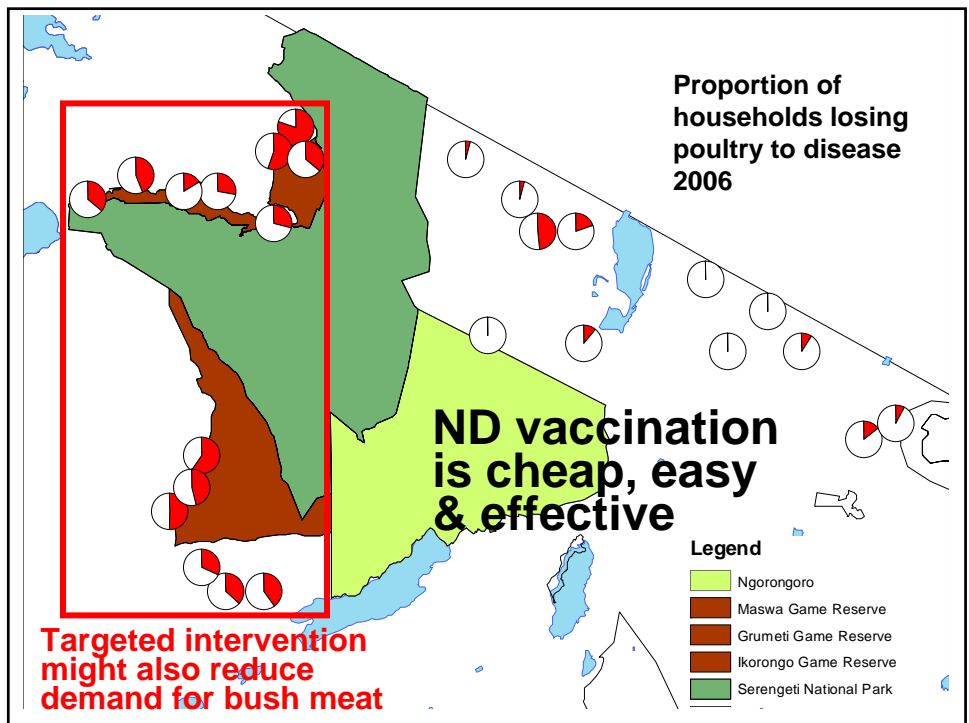
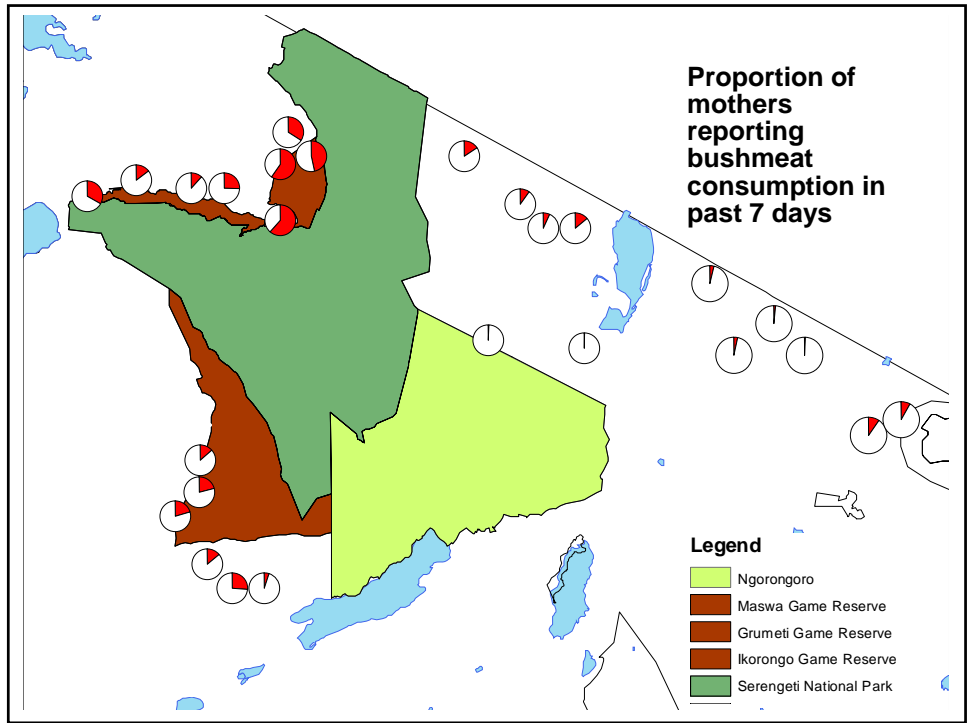
### Mission

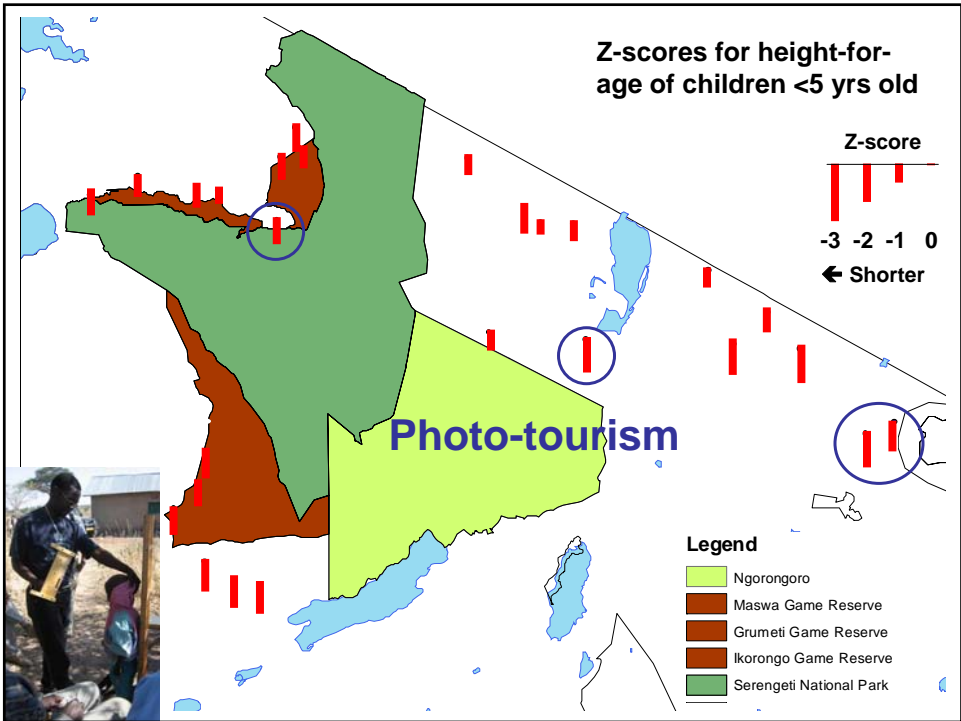
Provide practical, measurable solutions for reducing rural poverty and improving public health while sustaining natural resources

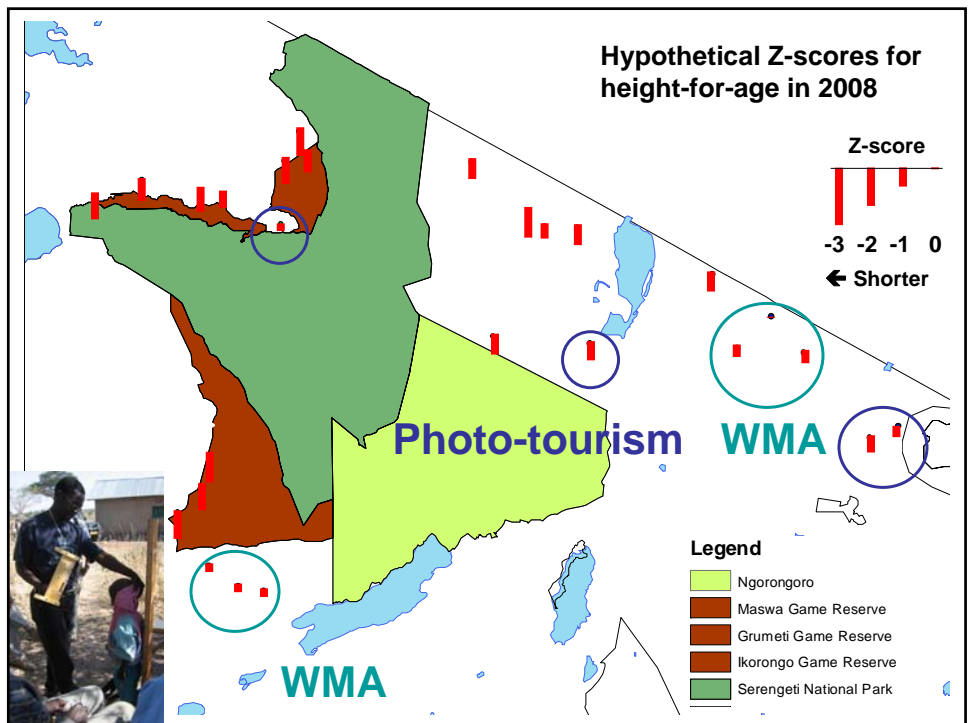
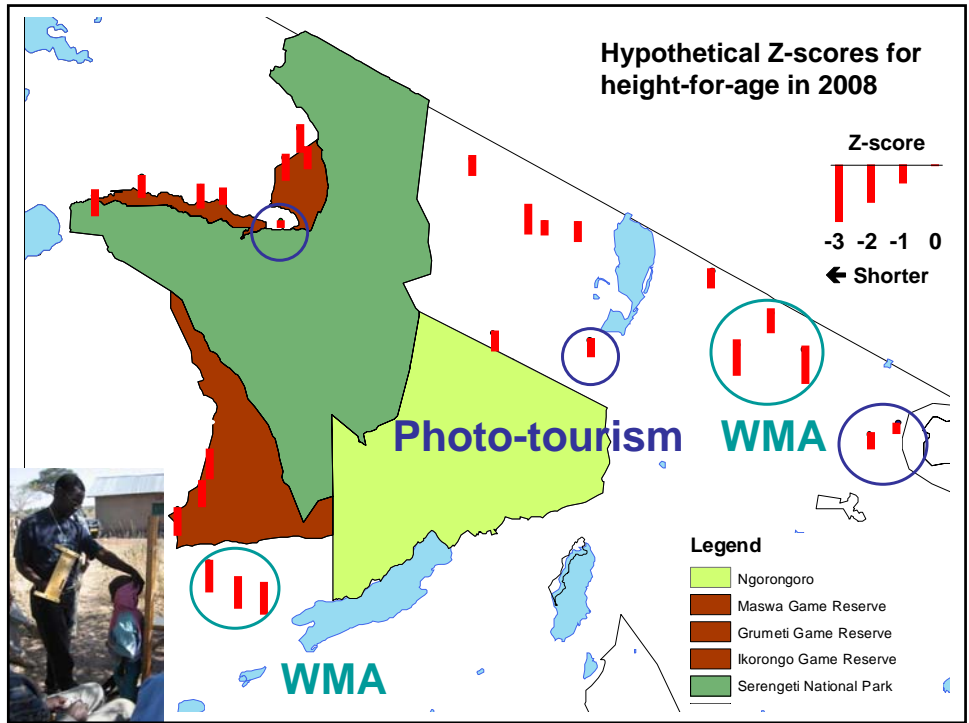
## SF Data Collection & Dissemination

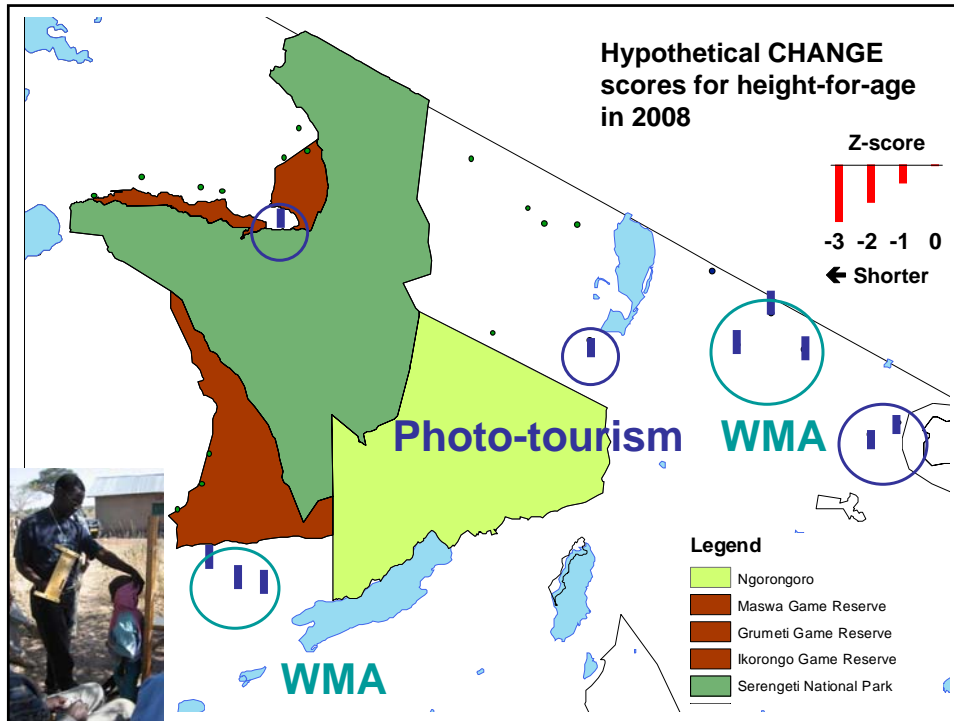
- Surveys:
  - Establish baseline data on socio-economics, public health and natural resource utilization/status
  - Measure changes @2 yr intervals
  - Develop tool kit of best intervention practices









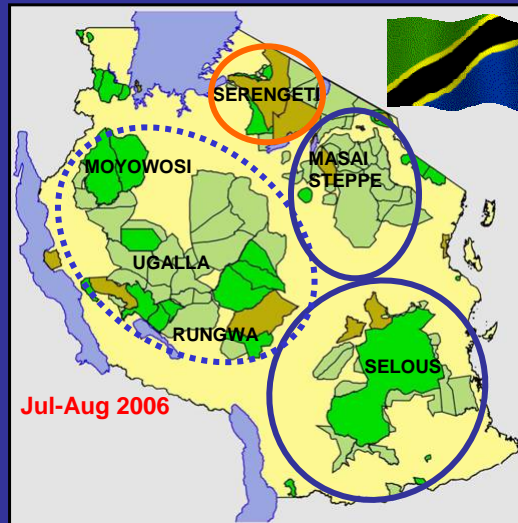


## Data collection & capacity building

- Surveys:
  - Establish baseline
  - Measure changes @2 yr intervals
  - Develop tool kit of best practices
- Rural capacity building :
  - Report survey data to village representatives
  - Communication/Training sessions in response to village needs
    - Monitor effectiveness of villages' own interventions
  - Linkages to relevant outside partners
    - Aid agencies/programs
    - Entrepreneurs

- Cover major areas in Tanzania (240+ villages)
- Mobilize & coordinate relevant agencies
- Establish core at MN:
  - Public Health
    - Epidemiology
    - Biostatistics
  - Medical School
    - International Med
    - Pediatrics
  - Vet School
    - Food safety
  - ICGC
  - IT
    - EWB
  - CFANS
    - Agronomy
    - Applied Econ
    - Bioresources/Bioenergy
    - Entomology
  - Inst. on the Environment

## Next Steps



## Contributions of each college

- CVM
  - Production-limiting disease
    - Fertility
    - Neonatal mortality
    - Death loss
    - Nutrition
    - Treatment costs?
  - Zoonotic Disease
  - Food Safety